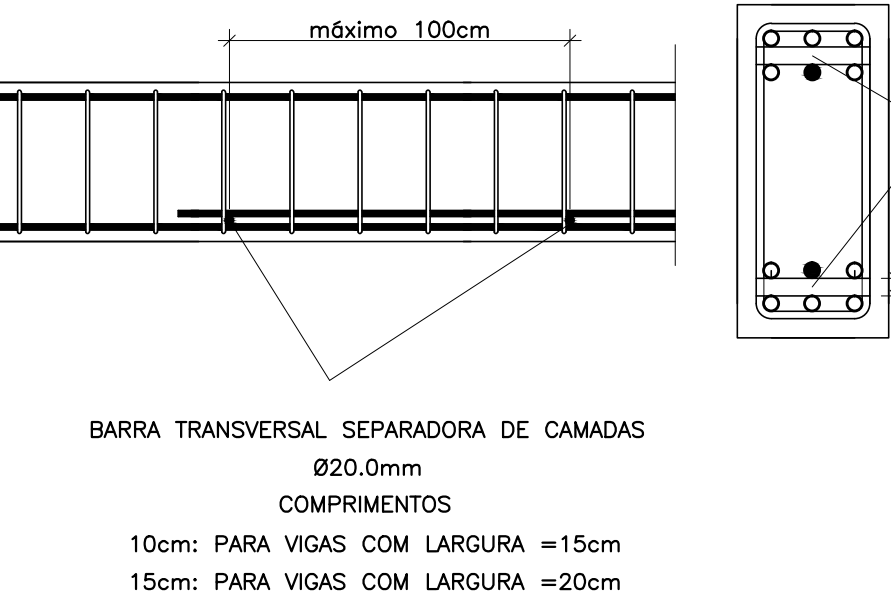
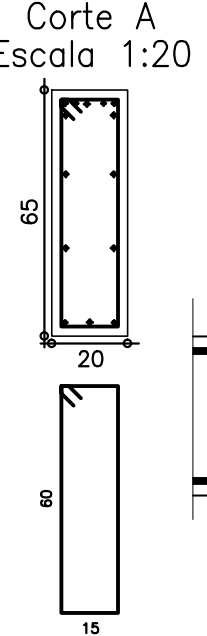
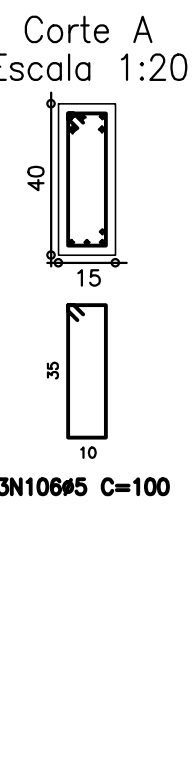
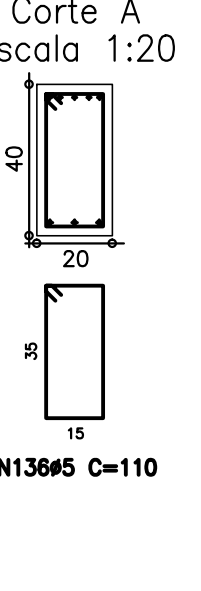
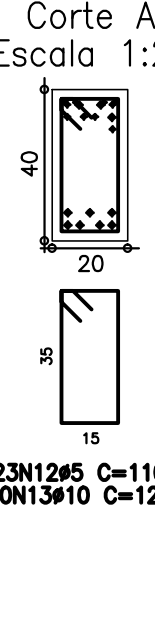
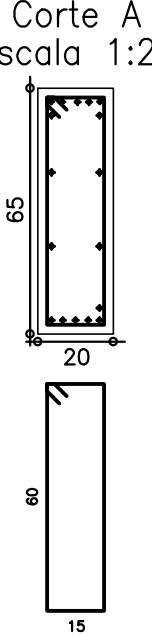
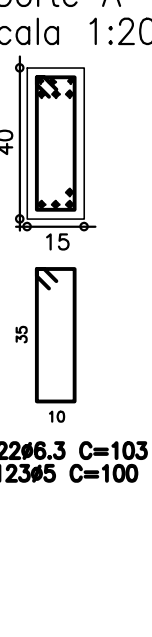
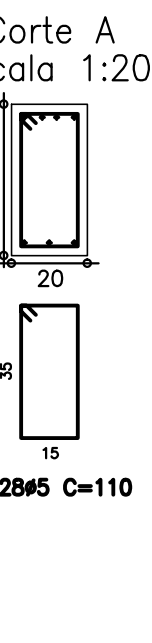
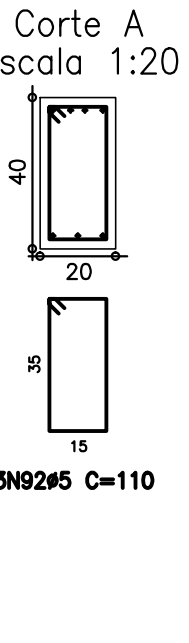
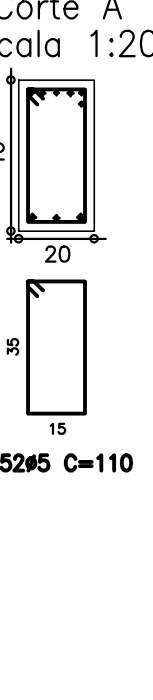
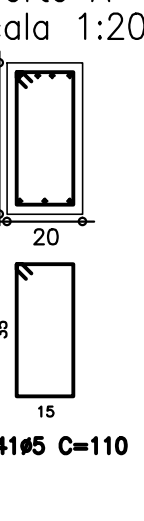
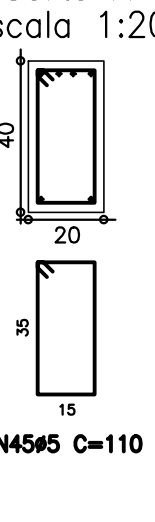
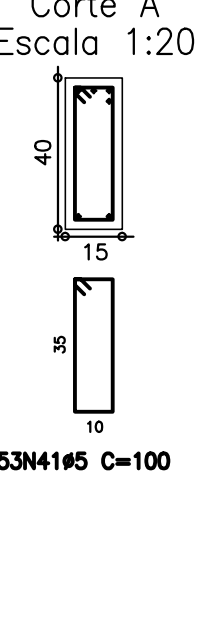


Resumo Aço 1° PAVTO Vigas	Comp. total (m)	Peso+10% (kg)	Total
CA-50-A	625.8	170	
ø6.3	2368.7	1023	
ø8	1534.5	1060	
ø10	686.5	741	
ø12.5	185.6	320	
ø16	41.3	112	3426
ø20	2616.1	452	452
CA-60-B			
ø5			
Total			3878

v 56	131	ø8	2	10	575	10	595	1190	4.7	Elemento	Pos	Diam. Q	Dob.	Ret(Dob)	Comp	Tot(Ca-50)	-ACa-60			
	138	ø8	2	10	575	10	595	1190	4.7											
	139	ø8	2	10	575	10	595	1190	4.7											
	140	ø8	2	10	575	10	595	1190	4.7											
	141	ø5	28	10	140	10	150	600	4.8											
Totale+10K:										14.9		5.3								
v 54	142	ø12.5	2	10	610	10	610	1220	12.0	V 1	16	ø10	2	1170	1170	2340	170	144		
	143	ø10	2	10	380	380	380	760	2.5											
	144	ø8	2	10	310	310	320	640	2.4											
	145	ø8	2	10	305	10	315	630	2.5											
	146	ø10	2	10	285	10	290	580	2.5											
	147	ø10	2	10	285	10	290	580	2.5											
	148	ø8	2	10	285	10	290	580	2.5											
	149	ø8	2	10	285	10	290	580	2.5											
	150	ø10	2	10	333	12	345	1035	6.5											
	151	ø10	2	10	220	10	220	440	2.6											
	152	ø10	2	10	210	210	210	420	2.6											
	153	ø10	2	10	180	180	180	360	2.1											
	154	ø8	1	175	175	175	350	7.0												
	155	ø8	1	150	150	150	300	6.0												
	156	ø10	2	10	180	180	180	360	2.1											
	157	ø10	2	10	180	180	180	360	2.1											
	158	ø10	2	10	180	180	180	360	2.1											
	159	ø6.3	32	10	285	290	290	580	7.4											
Totale+10K:										102.9										
										ø6.3:		98.2								
										ø6.3:		72.3								
										ø8:		226.2								
										ø10:		402.6								
										ø12.5:		262.3								
										ø16:		44.9								
										Totale:		1048.3		98.2						
V 2	38	ø8	2	10	968	10	968	1936	9.2	V 2	38	ø8	2	968	968	1932	7.7	28.3		
	39	ø8	2	10	968	10	968	1936	9.2											
	40	ø8	2	10	245	245	245	490	1.9											
	41	ø5	53	10	100	100	5300	19.0												
	42	ø8	2	10	968	10	968	1936	9.2											
										Totale+10K:		208.7		31.1						

[illegible]

FOLHA:  
41/64